

Monoblock Radiating Cable Clamps for Ladders



MATERIAL

| | |
|------------------------------|--|
| Body | PA6V0 Self Extinguishing Halogen Free UL94 - V0 |
| Operating Temperature | - 40°C + 125°C |
| Colour | Black |

RAW – APP

Monoblock Radiating Cable Clamps for Ladders

The RAW – APP cable clamps have been especially designed for quick installation of radiating cables on ladders, provided with rectangular slots 9x35 mm and 11x35 mm.

The RAW – APP cable clamps can be safely installed on metal ladders with thickness 1.25 – 1.5 mm, and include integrated spacer (80 mm).

The RAW – APP cable clamps are designed to allow fast installation of radiating cables on ladders without need of tools. For installation insert the cable clamp in the rectangular slot on ladder and rotate till lock position.

To prevent cable lines from falling down, in case of fire, a RAW + RSD cable clamp can be installed among RAW – APP cable clamps, using metal screws and nuts, at a suitable distance of 5 – 10 m.

RAW – APP

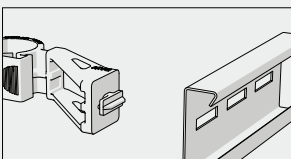
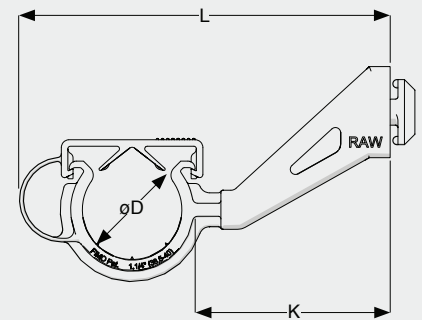
Fissacavi Monoblocco per Cavi Radianti su Scalette

I fissacavi RAW – APP sono progettati per una rapida installazione di cavi radianti su scalette dotate di finestre rettangolari 9x35 mm e 11x35 mm.

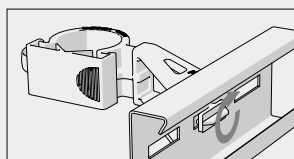
I fissacavi RAW – APP possono essere installati su scalette metalliche di spessore 1.25 – 1.5 mm e hanno integrato il distanziatore da 80 mm.

I fissacavi RAW – APP sono progettati per un veloce aggancio di cavi radianti su scalette, senza l'utilizzo di utensili. Per l'installazione inserire il fissacavo nella finestra rettangolare sulla scaletta e ruotare fino alla posizione di bloccaggio.

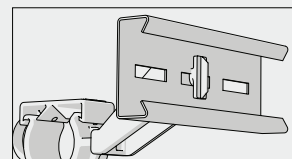
Per conferire all'impianto protezione anticaduta in caso di incendio, è possibile installare un RAW + RSD intercalato ai fissacavi RAW – APP, utilizzando viteria metallica, ad opportuna distanza (5 – 10 m).



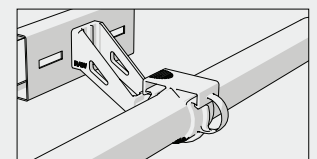
Rotate RAW horizontally clockwise.



Insert TAB on back of RAW into slot.



Rotate RAW anticlockwise to vertical position



Insert cable and close bracket. Installed in few seconds!

| CODE* | ARTICLE | CABLES | FOR CABLES ØD | K | L | BAG | WEIGHT |
|--------------|-------------------------------|--------|---------------|----|-----|-----|--------|
| 61 5041 0012 | RAW 1/2"- 80 APP11 x 1.25 | 1/2" | 15.5 - 17 | 80 | 117 | 50 | 40 |
| 61 5041 0078 | RAW 7/8"- 80 APP11 x 1.25 | 7/8" | 26.5 - 28 | 80 | 132 | 50 | 47 |
| 61 5041 0079 | RAW 7/8" M- 80 APP11 x 1.25 | 7/8" | 28.5 - 29.5 | 80 | 132 | 50 | 47 |
| 61 5041 0114 | RAW 1.1/4"- 80 APP11 x 1.25 | 1.1/4" | 38.5 - 40 | 80 | 143 | 50 | 54 |
| 61 5041 0115 | RAW 1.1/4" M- 80 APP11 x 1.25 | 1.1/4" | 40.5 - 42 | 80 | 143 | 50 | 54 |
| 61 5041 0158 | RAW 1.5/8"- 80 APP11 x 1.25 | 1.5/8" | 48.5 - 50.5 | 80 | 152 | 50 | 59 |
| 61 5042 0012 | RAW 1/2"- 80 APP9 x 1.25 | 1/2" | 15.5 - 17 | 80 | 117 | 50 | 40 |
| 61 5042 0078 | RAW 7/8"- 80 APP9 x 1.25 | 7/8" | 26.5 - 28 | 80 | 132 | 50 | 47 |
| 61 5042 0079 | RAW 7/8" M- 80 APP9 x 1.25 | 7/8" | 28.5 - 29.5 | 80 | 132 | 50 | 47 |
| 61 5042 0114 | RAW 1.1/4"- 80 APP9 x 1.25 | 1.1/4" | 38.5 - 40 | 80 | 143 | 50 | 54 |
| 61 5042 0115 | RAW 1.1/4" M- 80 APP9 x 1.25 | 1.1/4" | 40.5 - 42 | 80 | 143 | 50 | 54 |
| 61 5042 0158 | RAW 1.5/8"- 80 APP9 x 1.25 | 1.5/8" | 48.5 - 50.5 | 80 | 152 | 50 | 59 |