

2-Channel RX Power Splitter

DESCRIPTION

- Low power, compact 2-channel power splitter/combiner.
- The splitter covers the frequency range from 50 – 1000 MHz.
- Almost no ripple in loss and isolation over the entire frequency range.

SPECIFICATIONS

| Electrical | |
|---------------------------|---------------|
| Model | PRO-RPS-4-N |
| Frequency | 50 - 1000 MHz |
| Max. Input Power | 2 W |
| Insertion Loss | < 4.2 dB |
| Impedance | 50 Ω |
| Isolation Between Outputs | > 20 dB |
| VSWR | < 1.3:1 |
| No. of Channels | 2 - 2 |

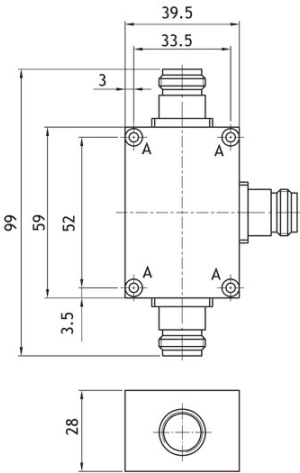
| Mechanical | |
|---------------|---|
| Connection(s) | N(f) |
| Dimensions | 99 x 39 x 28 mm / 3.89 x 1.53 x 1.10 in. |
| Weight | 0.15 kg / 0.33 lb. |
| Mounting | 3.2 mm / 0.12 in. dia countersunk (4 holes) |

| Environmental | |
|-----------------------------|----------------|
| Operating Temperature Range | -30°C to +60°C |

ORDERING

| Type | Product No. |
|-------------|-------------|
| PRO-RPS-2-N | 210000599 |

MOUNTING DETAILS



All dimensions are given in mm [in.]



INSERTION LOSS & ISOLATION

