

Double Yagi antenna, 11 dBd, 380 - 400 MHz

DESCRIPTION

- > A bayed 4-element Yagi array for UHF indoor coverage systems.
- > The antenna is designed to offer a narrow beam pattern, very low sidelobes and high front to back ratio, making it ideal as a donor / pickup antenna in indoor UHF repeater systems.

SPECIFICATIONS

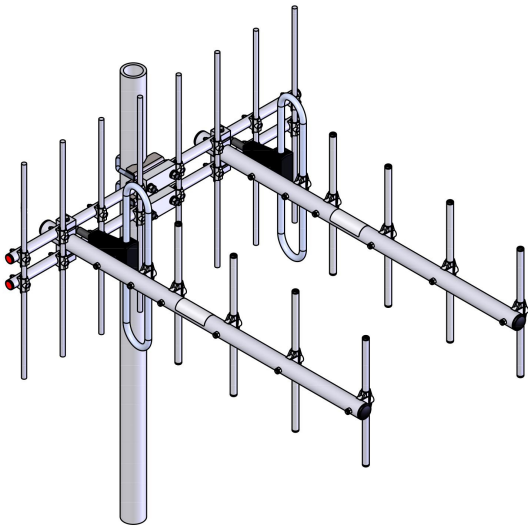
Electrical	
Frequency	380 - 400 MHz
Max. Input Power	150 W
Polarisation	Linear (Vertical or Horizontal)
3 dB Beamwidth, E-Plane	49 °
3 dB Beamwidth, H-Plane	38 °
Impedance	50 Ω
Gain	11 dBd (13.2 dBi)
VSWR	< 1.5:1
Front-To-Back Ratio	> 20 dB
Antistatic Protection	All metal parts DC-grounded (Connector shows a DC-short)
1st Sidelobe level	-25 dB

Mechanical	
Connection(s)	N(f) on 1.3m RG213/U cable (including splitter)
Materials	Boom, 32 mm dia. aluminium elements, 12.7 mm dia. aluminium balun, fully moulded enclosure
Dimensions	750 x 830 x 480 mm / 29.5 x 32.7 x 18.9 in.
Wind Load	141 N (160 km/h)
Weight	Approx. 5.5 kg / 12.1 lb.
Mounting Bracket	Included for 32 - 50 mm mast
Balun Encapsulant	Polyurethane Resin U-600

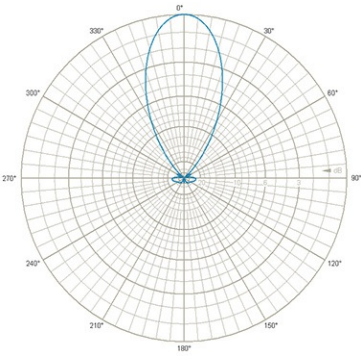
Environmental	
Operating Temperature Range	-40 °C to +65 °C
Ingress Protection	IP68

ORDERING

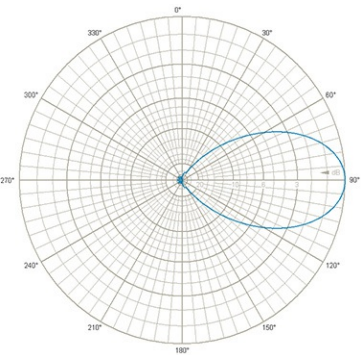
Model	Product No.
-------	-------------



RADIATION PATTERN, H PLANE



RADIATION PATTERN, E-PLANE



NOTE:

For transportation, Yagis, reflector and cable coupler are delivered disassembled.

