

Quadruple-Band Base Station and Marine Antenna for the 900 MHz, 1800 MHz, 1900 MHz and the 2000 MHz

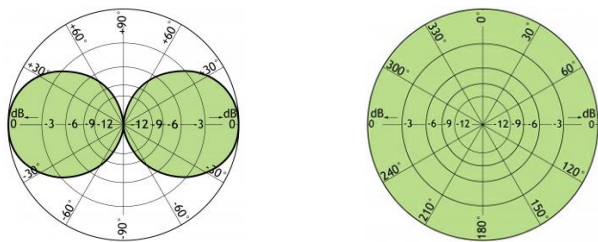
DESCRIPTION

- Quadruple-Band base station and marine antenna – four bands with only one antenna.
- Covering both GSM/NMT-900, DCS-1800/PCN (GSM 900/1800), PCS-1900 and UMTS.
- Particularly suitable for use with triple-band mobile phones.
- Unity gain on all bands.
- Wide variety of accessory mounting brackets available.
- The carefully designed, broad-banded antenna element is sealed in a high-quality, conical glass fibre tube with low wind-load, which will ensure performance undisturbed by corrosive environments.
- Provided with the sturdy “LW” mast mount – a lightweight, multipurpose, epoxy-coated mounting bracket made of non-corrosive aluminium.
- The cable can be led either on the outside or along the inside of the mast tube.
- Large bandwidth with respect to both SWR and gain.
- To substantially reduce noise caused by atmospheric discharges, all metal parts in the antenna are DC-grounded. Consequently, the antenna shows a DC-short across the coaxial cable.
- The CXL 900/1800/1900/UMTS/LW is a vibration-proof, lightweight, slimline, corrosion resistant, modern style base station and marine antenna.

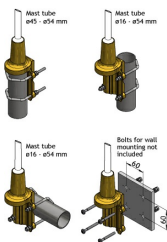


DIAGRAM

TYPICAL RADIATION PATTERN (E-PLANE) TYPICAL RADIATION PATTERN (H-PLANE)



MULTI-PURPOSE MOUNTING BRACKET



SPECIFICATIONS

Electrical	
Model	CXL 900/1800/1900/UMTS/LW
Frequency	800 - 960 MHz/1710 - 1880 MHz/ 1850 - 1990 MHz/1900 - 2200 MHz (GSM 900/DCS-1800/PCS-1900/UMTS)
Antenna Type	Quadruple-Band base station and marine antenna
Max. Input Power	100 W
Polarisation	Vertical
3 dB Beamwidth, E-Plane	80 °
3 dB Beamwidth, H-Plane	Omnidirectional
Impedance	50 Ω
Gain	-2.2 dBd (0 dBi)
VSWR	GSM @ = 2.0:1 DCS-1800 @ = 2.0:1 PCS-1900 @ = 3.0:1 UMTS @ = 3.0:1
Antistatic Protection	All metal parts DC-grounded (Connector shows a DC-short)
HCM Code(s)	

Mechanical	
Connection(s)	N(f)
Materials	Shroud: Polyurethane-coated glass fibre Mounting bracket: Seawater resistant aluminium, epoxy-coated Clamps: Stainless steel
Colour	White (RAL 9003)
Wind Area	0.018 sq. m / 0.19 sq. ft
Wind Load	23 N (160km/h)
Dia. At Top End	21 mm / 0.83 in.
Dia. At Bottom End	23 mm / 0.91 in.
Height	500 mm / 19.69 in.
Weight	0.6 kg / 1.32 lb
Mounting	On 16 to 54 mm dia. mast tube

Environmental	
Operating Temperature Range	-30°C to +70°C
Survival Wind Speed	200 km/h

ORDERING

Type	Product No.
CXL 900/1800/1900/UMTS/LW	110000229