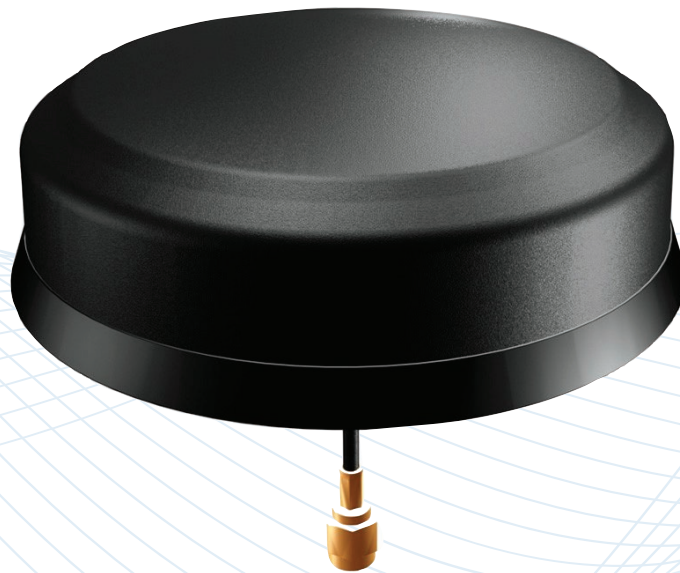


# Smarteq™ SmartDisc™ Combi GNSS Low Profile Antenna

Combination Antennas - Cellular + GNSS

710480



## Description

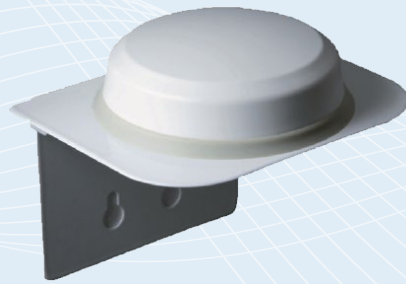
Low-profile, whipless combination antenna that delivers reliable RF performance.

## Technologies

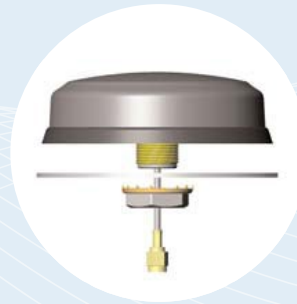
- 2G/3G
- GNSS
- GPS: L1
- Galileo: E1
- Glonass: L1

## Features

- Easy installations with hole or adhesive mount
- Durable design for a range of M2M, IoT, and vehicle installations
- Patented technology



707154 – Optional white angled mounting bracket



Hole mount

## Smarteq™ SmartDisc™ Combi GNSS Low Profile Antenna

### Combination Antennas - Cellular + GNSS

The Smarteq™ SmartDisc™ Combi GNSS is versatile, low-profile antenna with durable design. The antenna is ground plane independent enabling flexible and easy installation.

#### Features

- Cellular: 790-960MHz and 1710-2690MHz
- GNSS : 1575-1610MHz (GPS: L1, Galileo: E1, Glonass: L1)
- Discreet design with center screw installation
- IP67 class
- Cable approved acc ECE-R118
- Designed in Sweden with Patented technology

#### Applications

- Critical Communications
- EV Charging
- FirstNet
- Industrial IoT
- Intelligent Transportation

#### Certifications



## SPECIFICATIONS



# Smarteq™ SmartDisc™ Combi GNSS Low Profile Antenna

## Combination Antennas - Cellular + GNSS

### Standard Configurations\*

Part Number	Cable Color	Installation Type	Cable Length / Type		Connector Type	
			Cellular	GPS	Cellular	GPS
710480	Black	Long screw	0.2m / RG316	0.3m / RG316	FME(m)	SMA(m)

\*PLEASE NOTE: Other configurations than the above version are available on request.

### Electrical Specifications

	Cellular	GPS
Frequency Ranges	790-960MHz / 1710-2690MHz	1575-1610MHz (GPS: L1, Galileo: E1, Glonass: L1)
Impedance	50Ω	50Ω
Polarization	Vertical	RHCP
VSWR	3:1	2:1
Gain	790-960MHz: 2.15dBi 1710-2690MHz: 3.15dBi	GPS Passive: 3.5dBic @ zenith, fc GPS Active: 27dB
Max. Power	10W	10W
Supply Voltage	2,8-5,5V	2,8-5,5V
Current consumption	15-25mA	15-25mA
Noise Figure	<=1,5 dB	<=1,5 dB

### Mechanical and Environmental Specifications (All Models)

#### Physical

Dimensions (D x H)	96 x 26mm
Weight	~190g
Installation*	Hole mount with center screw • Standard screw: Material thickness ≤ 3.5mm • Long screw: Material thickness ≤ 23.5mm  Hole dimension Ø19mm Min. installation radius 1000mm *Installation type is defined by part number according to the table above.
Cable	Cable type and length is defined by part number according to table above.
Connector	Connector type is defined by part number according to the table to above.
Material	PC/PBT/Aluminum alloy
Housing Color	Black or White
Accessories	707154 – White angled bracket
Operating / Storage Temperature	-40°C to +85°C
Certifications	RoHS compliant; Certified according to 2014/53/EU Radio Equipment Directive (RED)
IP Class	IP67

**CONTACT US**

**For more information about  
this product contact your  
sales representative or visit  
> [pctel.com/antenna-products](https://pctel.com/antenna-products)**

### **Solving Complex Wireless Challenges**

PCTEL is a leading global provider of wireless technology solutions, including purpose-built Industrial IoT devices, antenna systems, and test and measurement products. Trusted by our customers for 29 years, we solve complex wireless challenges to help organizations stay connected, transform, and grow.



**PCTEL, Inc.**

T: +1 630 372 6800 | [pctel.com](https://pctel.com)

Specifications subject to change without notice. PCTEL®, Smarteq™ and SmartDisc™ are trademarks or registered trademarks of PCTEL, Inc. ©2023 PCTEL, Inc. All rights reserved. (October 2023)