

## 6-Cavity base station duplexers for the 450 MHz band

### DESCRIPTION

- 150 W base station duplexers.
- Both the  $\frac{1}{4} \lambda$  models and the  $\frac{3}{4} \lambda$  models are continuously tunable from 406 MHz to 470 MHz.
- Low insertion loss due to silver-plated, temperature compensated resonator elements in high-Q 40 x 40 mm cavities.
- Single channel tuned as standard.
- Multi-channel tuning possible with slightly reduced data (factory tuning recommended).
- Fully environmentally tested.

DPF 70/6-150 cavity type  $\frac{1}{4} \lambda$ DPF 70/6-150 cavity type  $\frac{3}{4} \lambda$ 

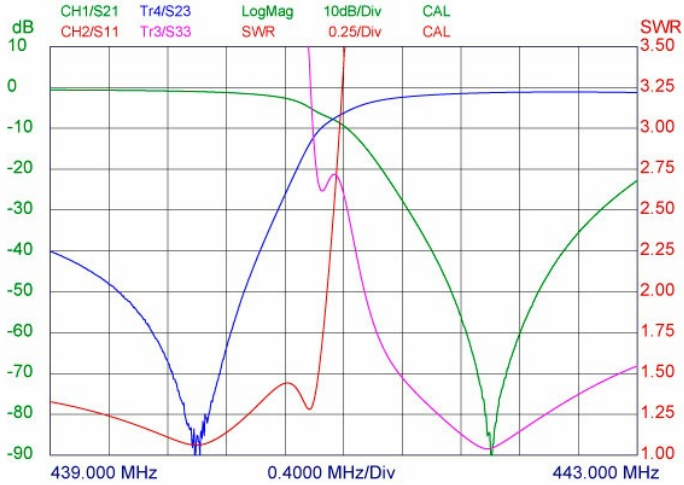
### SPECIFICATIONS

Electrical				
Model	DPF 70/6-150-... $\frac{3}{4} \lambda$		DPF 70/6-150-... $\frac{1}{4} \lambda$	
Cavity Type	$\frac{3}{4} \lambda$		$\frac{1}{4} \lambda$	
Frequency	406 - 470 MHz		406 - 470 MHz	
Max. Input Power	150 W		150 W	
Special spec. info	Single-channel tuned. Spacing = 2 MHz, P ≤ 100 W	Single-channel tuned. Spacing = 3.5 MHz, P ≤ 100 W	Single-channel tuned. Spacing = 5 MHz, P ≤ 150 W	Multi-channel tuned. Spacing = 5 MHz, BW Tx and Rx = 2 MHz, P ≤ 100 W
Insertion Loss Tx-Ant and Ant-Rx	≤ 1.4 dB	≤ 1.3 dB	≤ 1.2 dB	≤ 1.4 dB
Tx Noise Suppression on Rx Frequency	> 70 dB	> 80 dB	> 80 dB	> 60 dB
Isolation Rx on Frequency Tx	> 70 dB	> 80 dB	> 80 dB	> 60 dB
Impedance	50 Ω		50 Ω	
Duplex Spacing	2 - 3 MHz		3 - 5 MHz	
VSWR	< 1.5:1		< 1.5:1	
Mechanical				
Connection(s)	N(f)		N(f)	
Colour	Black		Black	
Dimensions	Approx. 557 x 250 x 50 mm / 21.93 x 9.84 x 1.97 in.		Approx. 238 x 250 x 50 mm / 9.37 x 9.84 x 1.97 in.	
Weight	Approx. 4.6 kg / 10.14 lb.		Approx. 2.5 kg / 5.51 lb.	
Environmental				
Operating temperature range	-30 °C to +60 °C		-30 °C to +60 °C	
Frequency Stability	Approx. 4.5 ppm / °C		Approx. 4.5 ppm / °C	

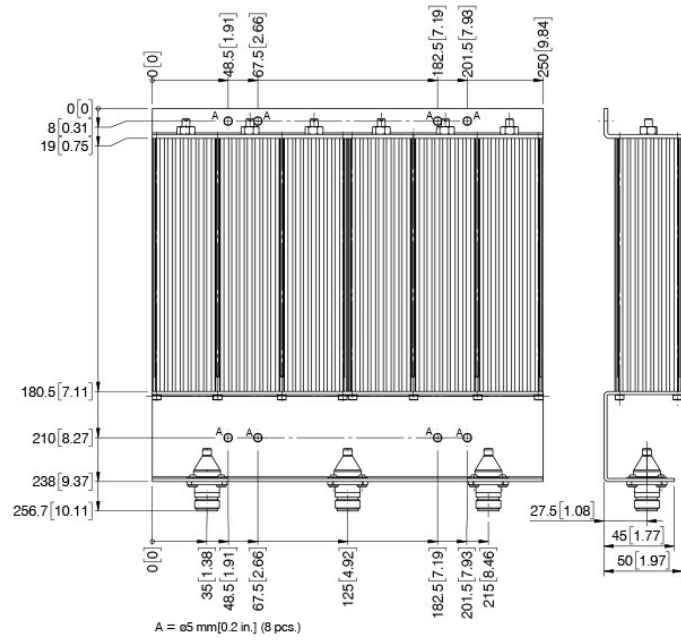
ORDERING

Model	Product No.	Description	Frequency
DPF 70/6-150-2/3	200000369	CAVITY TYPE: 1/4 $\lambda$	2 - 3 MHz
DPF 70/6-150-3/5	200001617	CAVITY TYPE: 1/4 $\lambda$	3 - 5 MHz
DPF 70/6-150-5/7	200001610	CAVITY TYPE: 1/4 $\lambda$	5 - 7 MHz
DPF 70/6-150-7/9	200001615	CAVITY TYPE: 1/4 $\lambda$	7 - 9 MHz
DPF 70/6-150-9/11	200001612	CAVITY TYPE: 1/4 $\lambda$	9 - 11 MHz
DPF 70/6-150-11/13	200001872	CAVITY TYPE: 1/4 $\lambda$	11 - 13 MHz
DPF 70/6-150-13/15	200001873	CAVITY TYPE: 1/4 $\lambda$	13 - 15 MHz
DPF 70/6-150-2/3- $\frac{3}{4}$ $\lambda$	200001689	CAVITY TYPE: 3/4 $\lambda$	2 - 3 MHz
DPF 70/6-150-3/5- $\frac{3}{4}$ $\lambda$	200002062	CAVITY TYPE: 3/4 $\lambda$	3 - 5 MHz

TYPICAL VSWR CURVE

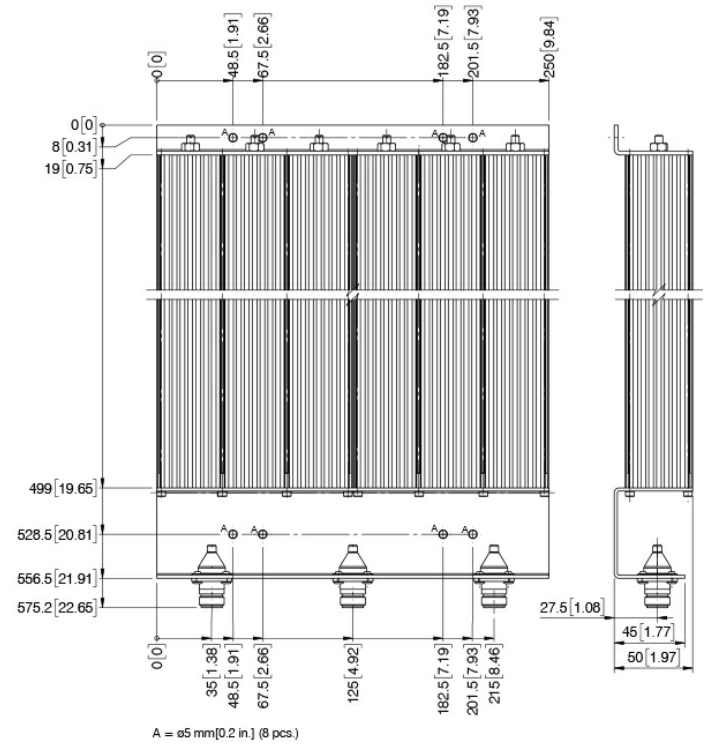


MOUNTING DETAILS FOR ¼ A MODELS



All dimensions are given in mm [in.]

MOUNTING DETAILS FOR ¼ A MODELS



All dimensions are given in mm [in.]

