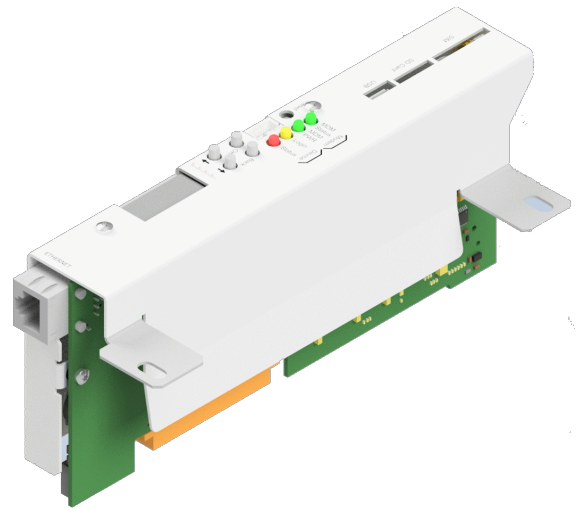


## Cobra-B

### Next Generation Modular Controller (Box Mounted)

#### Key features

- Drop-in replacement for the H40 controllers.
- Fast iMX6 CPU, 512 MB memory, 4 GB flash storage.
- Modular Plug-and-Play design.
- Optional SD Card for further external storage.
- Software upgrades via multiple channels.
- Secure protocols such as HTTPS and SNMP v3.
- Up to date operating system for added security.
- Front panel LCD for simplified support operations along with USB, Ethernet, SD, and SIM Card sockets.



The Cobra Controllers are a range of innovative, modular units designed as drop-in replacements for the older generation of controllers. They provide a host of new and improved features to both existing and new products, along with an added level of security with the addition of HTTPS and SNMP v3.

The modern iMX6 CPU architecture provides a powerful and efficient framework and the dual Arm Cortex A9 cores provide an extremely responsive experience whilst retaining low power usage.

Easy plug-and-play functionality allows in-field changes to connectivity capabilities without the need for reprogramming. Support is provided for local, Ethernet, 2G, 3G and 4G connectivity.

The front panel now includes an LCD and navigation buttons to enable the operator to obtain useful information without the need to connect remotely via a computer. This information includes details such as Network configuration, Active Alarm status, Software Versions etc.

Multiple software versions and variants can be located locally meaning the module can be reconfigured without the need to be returned for reprogramming. Software upgrades can be performed in the field utilising several different mechanisms.

#### Technical specification

Specification	
CPU	iMX6 Dual Arm Cortex™-A9, 1 GHz
Memory	512 MB DDR3
Flash Storage	4 GB
SIM Card	Standard size SIM
LCD Interface	32 x 128 OLED
LEDs	Status, Login, Modem Power, Modem Status
Reset	Recessed reset button on front panel
SD Card capacity	Maximum 32 GB
Ethernet	10/100 Mb
Local connectivity	USB, RS-232, Ethernet
Modem	M.2 (42mm)
Power requirements	
Voltage supply	6.4 V to 9.5 V DC
Power consumption	< 5 W (Without Modem fitted)
Environmental and Mechanical specification	
Operating temperature range	0°C to 70°C
Installation	Box Mounted (For clamshell configurations)
Part number:	COBRA-B01 / COBRA-B02