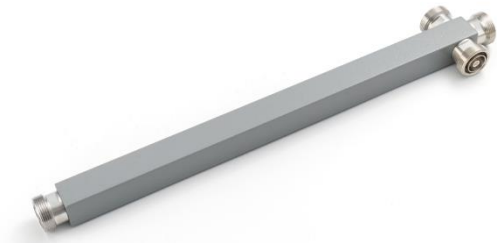


3-Way Reactive Power Splitter 5501.41.0103

Description

Installation Equipment for Special Communication Antennas.
3-Way Low-loss Power Splitter 340-3800 MHz.
Multi-band.
Low PIM -160 dBc.
For Indoor and Outdoor Use.
7/16 connector interface.



Product Configuration

Technical Data

Electrical Data

	Signal Band 1
Frequency (MHz)	340 - 3800
Split Loss (dB)	4.8
Impedance (Ohm)	50
Composite power max (W)	500
Peak Envelope Powe (W)	1500
Ambient temperature (°C)	25
PIM3 (dBc, @2x43dBm)	-160

Input

	Input 1
Connector type	7/16
Connector gender	jack (female)

Output

	Output 1	Output 2	Output 3
Connector type	7/16	7/16	7/16
Connector gender	jack (female)	jack (female)	jack (female)

General Data

DC capability: DC transmission between all terminations (suitable for remote power supply systems).

Mechanical Data

Dimensions (mm)	365 x 25 x 25 (Length x Height x Width (without connector dimension))
Weight (kg)	0.7
Mounting	Bracket for wall mounting included in the scope of supply For pipe mast mounting use clamps listed below (order separately)

Environmental Data

Environmental conditions	indoor/outdoor
Operation temperature (°C)	-55 °C to 60 °C
IP rating	IP65
2011/65/EU (RoHS - including 2015/863 and 2017/2102)	compliant
REACH 1907/2006/EC	compliant

Environmental tests according ETSI EN 300 019-1-4:
IEC 60068-2-1 (2008), Environmental testing - Part 2-1: Cold
IEC 60068-2-1 (2008), Environmental testing - Part 2-1: Dry heat

3-Way Reactive Power Splitter
5501.41.0103

Material Data

Material body	Aluminium
Surface treatment body	Powder coating
Material connector	Brass
Surface treatment connector	CuSnZn3

Related Products

(Order separately)
734364 Tension Band 120-140mm
734365 Tension Band 45-125mm

Related Documents

Mounting instruction	DOC-0001169717
Security instruction	DOC-0000278984
3D-model	DOC-0001173777

