



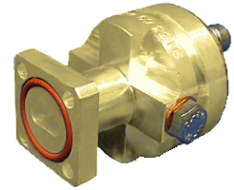
Connector for FLEXWELL® elliptical waveguide E300, PBR260 Flange

Standard connector for FLEXWELL® elliptical waveguide E300 with PBR260 flange, gasket with shrinking sleeve sealed frequency range: 24.95 - 29.5 GHz

FEATURES / BENEFITS

Superior Design

- ➞ Due to the precise manufacturing no tuning screws are necessary
- ➞ The terminations are brass passivated for good electrical performance
- ➞ A gas inlet is included



Quick & Easy Installation

- ➞ Different flaring tools are available
- ➞ No tuning in the field

Technical Features

STRUCTURE

| | | |
|---------------------------|-----|------------------------------|
| Transmission Line Type | | Elliptical Waveguide |
| Cable Type | | E300 |
| Model Series | | E300 Series |
| Connector Frequency Range | GHz | 24.95 - 29.5 |
| Connector Type | | Fixed |
| Sealing Method | | Gasket with Shrinking Sleeve |
| Plating Connector | | Brass |
| Waterproof Level | | IP68 |
| Gas Inlet | | M5 x 0.8 |
| Connector Interface | | PBR260 |

MECHANICAL SPECIFICATIONS

| | | |
|----------------|---------|------------|
| Length | mm (in) | 44 (1.7) |
| Outer Diameter | mm (in) | 32 (1.3) |
| Weight | kg (lb) | 0.2 (0.44) |

External Document Links

Installation Instruction
Application Note

Notes