



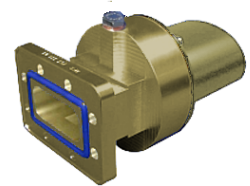
## Connector for FLEXWELL® elliptical waveguide E38, PDR40 Flange

Standard connector for FLEXWELL® elliptical waveguide E38 with PDR40 flange, Plast 2000 sealed frequency range: 3.6 - 4.2 GHz

### FEATURES / BENEFITS

#### Superior Design

- ➡ Due to the precise manufacturing no tuning screws are necessary
- ➡ The terminations are brass passivated for good electrical performance
- ➡ A gas inlet is included



#### Quick & Easy Installation

- ➡ Different flaring tools are available
- ➡ No tuning in the field

### Technical Features

#### STRUCTURE

Transmission Line Type		Elliptical Waveguide
Cable Type		E38
Model Series		E38 Series
Connector Frequency Range	GHz	3.6 - 4.2
Connector Type		Fixed
Sealing Method		Plast 2000
Plating Connector		Brass
Waterproof Level		IP68
Gas Inlet		G 1/8"
Connector Interface		PDR40

#### MECHANICAL SPECIFICATIONS

Length	mm (in)	165 (6.5)
Outer Diameter	mm (in)	102 (4)
Weight	kg (lb)	2 (4.41)
Sealing Volume	cm³ (ounces)	100 ( 3.38)

#### External Document Links

Installation Instruction

#### Notes

Sealing component PLAST 2000 is **not** part of the connector delivery and must be ordered separately.