

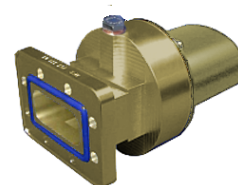
Connector for FLEXWELL® elliptical waveguide ES46, PDR48 Flange

Standard connector for FLEXWELL® elliptical waveguide ES46
 with PDR48 flange, Plast 2000 sealed
 frequency range: 4.4 - 5.0 GHz

FEATURES / BENEFITS

Superior Design

- ➞ Due to the precise manufacturing no tuning screws are necessary
- ➞ The terminations are brass passivated for good electrical performance
- ➞ A gas inlet is included



Quick & Easy Installation

- ➞ Different flaring tools are available
- ➞ No tuning in the field

Technical Features

STRUCTURE

Transmission Line Type		Elliptical Waveguide
Cable Type		ES46
Model Series		ES46 Series
Connector Frequency Range	GHz	4.4 - 5
Connector Type		Fixed
Sealing Method		Plast 2000
Plating Connector		Brass
Waterproof Level		IP68
Gas Inlet		G 1/8"
Connector Interface		PDR48

MECHANICAL SPECIFICATIONS

Length	mm (in)	140 (5.5)
Outer Diameter	mm (in)	88 (3.5)
Weight	kg (lb)	2 (4.41)
Sealing Volume	cm³ (ounces)	70 (2.37)

External Document Links

Installation Instruction

Notes

Sealing component PLAST 2000 is **not** part of the connector delivery and must be ordered separately.