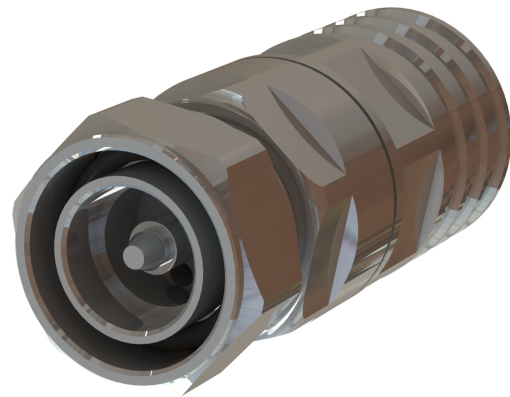




The P02 premium performance coaxial cable connectors are designed specifically to provide the highest quality connector-cable interface while simplifying and speeding up the attachment of connectors to RADIAFLEX® cables. The connectors should provide outstanding value to users because they permit quick, easy and reliable installation at any location, thereby allowing the operator flexibility while saving installation time and money.

**FEATURES / BENEFITS**

- Designed for Fast and Easy Installation - Reliable and simple attachment avoids unnecessary connector adjustments and provides
- Outstanding performance. Saves time and provides cost savings
- Robust Mechanical Design - Best in class PIM performance
- Excellent Electrical Performance - Low VSWR 201
- Totally Waterproof - Assures safe, long term operation in the harshest of environments.

**Technical features****GENERAL SPECIFICATIONS**

Transmission Line Type		Coaxial Cable
Cable Size		7/8
Cable Type		Radiating
Model Series		all RLF, RLK and RAY-Series
Connector Interface		7-16 DIN
Connector Type		Straight
Sealing Method		Shrinking Sleeve
Gender		Male

**ELECTRICAL SPECIFICATIONS**

Nominal Impedance	Ohm	50
3rd Order IM Product @ 2x20 Watts	dBc	-155 / -160 (typ.)
Maximum Frequency	GHz	3.7
VSWR	VSWR (dB)	0.0-1.0 GHz: 1.03 (36.6) >1.0-2.7 GHz: 1.06 (30.7) >2.7-3.7 GHz: 1.08 (28.3)

**MECHANICAL SPECIFICATIONS**

Length	mm (in)	84.7 (3.33)
Outer Diameter	mm (in)	35.5 (1.4)
Weight	kg (lb)	0.25 (0.55)
Body Material		Brass / Plating: Tri Metal
Inner Contact Material		Copper / Plating: Silver
Inner Contact Attachment		Spring Finger / Plating: Silver
Outer Contact Attachment		Spring Loop / Plating: Silver

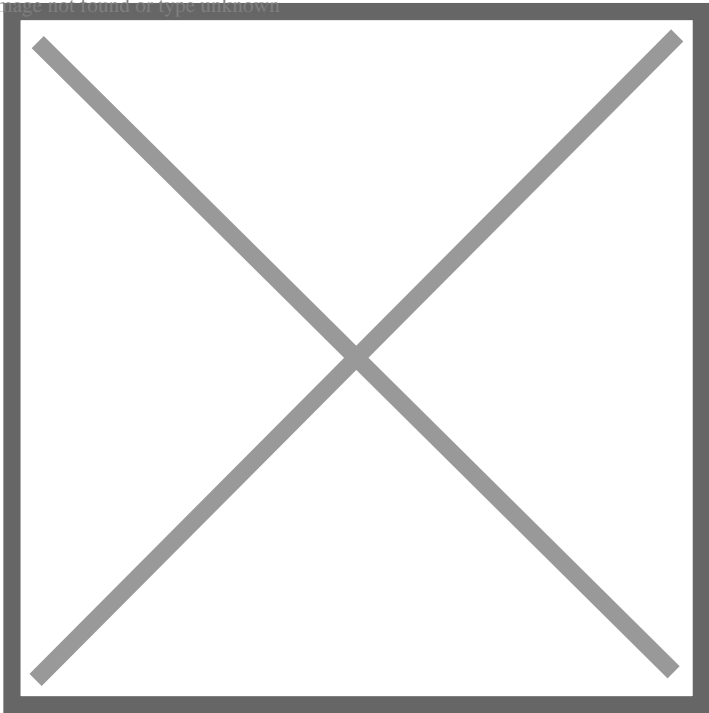
**ACCESSORIES**

Wrench size front	mm (in)	SW 32 (1.26)
Wrench size rear	mm (in)	SW 32 (1.26)
Trimming Tool		TRIM-SET-R78-P02

**TESTING AND ENVIRONMENTAL**

Waterproof Level		IP68
INSTALLATIONTEMPERATURECF	°C (°F)	-25 to 60 (-13 to 140)
STORAGETEMPERATURECF	°C (°F)	-70 to 85 (-94 to 185)
OPERATIONTEMPERATURECF	°C (°F)	-40 to 85 (-40 to 185)

Image not found or type unknown

**External Document Links**

[Installation of Heat Shrink Sleeves](#)  
[Installation Instruction](#)

**Notes**

- In order to achieve the PIM specs. the use of the trimming tool is mandatory.