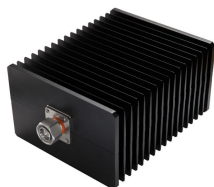


# T-100-UW-43-M

---

Termination Load, 0–6000 MHz



## Product Classification

**Product Type** Termination load

## General Specifications

**Device Type** Termination Load

**Application** Indoor/Outdoor

**Color** Black

**Inner Contact Plating** Silver

**Interface** 4.3-10 Male

**Outer Contact Plating** Trimetal

## Dimensions

**Height** 89 mm | 3.504 in

**Width** 140 mm | 5.512 in

**Length** 190 mm | 7.48 in

## Electrical Specifications

**Average Power, maximum** 100 W

**Impedance** 50 ohm

**Operating Frequency Band** 0 – 6000 MHz

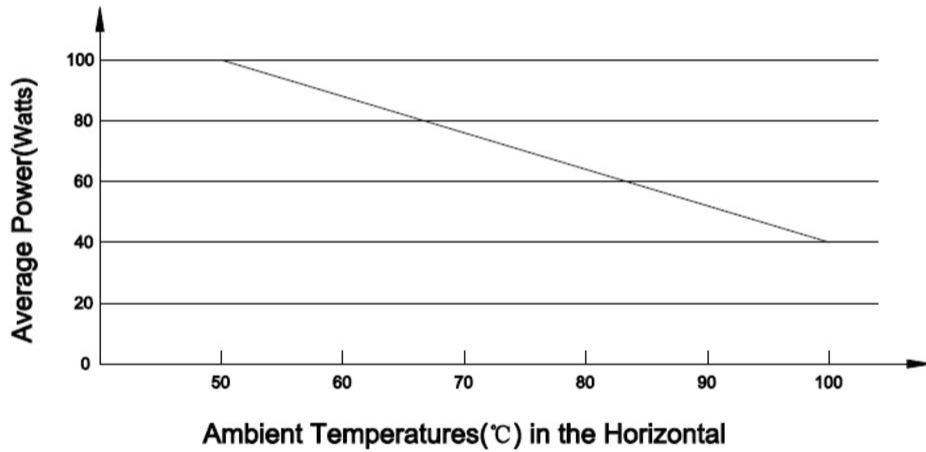
**VSWR** 1.2

## Derating Curve

# T-100-UW-43-M

---

T-100 Power Derating for ambient temperatures above 50°C



## Environmental Specifications

<b>Operating Temperature</b>	-25 °C to +50 °C (-13 °F to +122 °F)
<b>Relative Humidity</b>	Up to 100%
<b>Ingress Protection Test Method</b>	IEC 60529:2001, IP65

## Packaging and Weights

<b>Height, packed</b>	160 mm   6.299 in
<b>Width, packed</b>	235 mm   9.252 in
<b>Length, packed</b>	380 mm   14.961 in
<b>Weight, gross</b>	2.45 kg   5.401 lb
<b>Weight, net</b>	2 kg   4.409 lb

# T-100-UW-43-M

---

## Regulatory Compliance/Certifications

**Agency**

ISO 9001:2015

**Classification**

Designed, manufactured and/or distributed under this quality management system