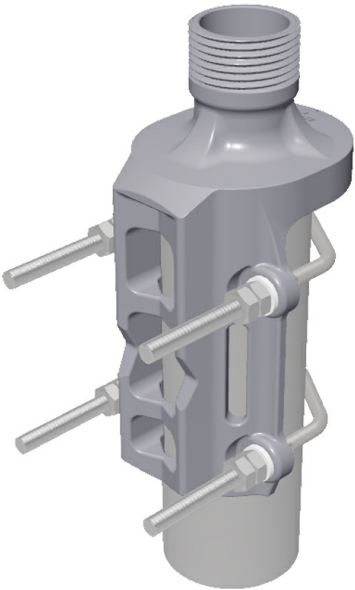


Universal Stainless Steel Mast Mounting Clamp for
Antennas Based on Mounting on 1" Threaded Tube

DESCRIPTION

- Using the LW-SS-1" universal mast mounting clamp all antennas specifically designed for mounting on 1" water pipe can be mounted on any kind of horizontal or vertical supporting mast tube, as long as the outer diameter of the tube is within 16 to 54 mm.
- The mounting bracket is made of stainless steel which makes it ideal for marine environments.
- Inside the marine sector the 1" water pipe mounting system for antennas has gained worldwide acceptance. The antennas are equipped with a revolving nut, which fits 1" RG (G1" - 11) threaded water pipe.
- The construction of the clamp makes it possible to run the download cable either along the inside or on the outside of the mast tube.
- Available as ATEX version, when equipotential bonding is not obtained through the mounting bracket and the need for a grounding kit is present.
- Using the GP adaptor (to be ordered separately) the LW-SS-1" can be used for GP antennas with GP heads.
- The LW-SS-1" mounting clamp is a member of a complete family of different mounting clamps for 1"-pipe-mount antennas. Below the complete programme is shown. Using the LW-SS-1" or one of these accessory items, a vast majority of all installations can be undertaken.



ORDERING

| Model | Product No. |
|---------------|-------------|
| GP Adaptor | 100000679 |
| LW-SS-1" | 110000394 |
| LW-SS-1"-EX * | 115000102 |

SPECIFICATIONS

| Electrical | |
|-------------|--|
| Model | LW-SS-1" |
| Application | Universal clamp for mounting antennas for 1" water pipe fixation on other kinds of vertical or horizontal mast tubes |
| Mechanical | |
| Materials | Mounting bracket: Stainless acid-proof steel (AISI 316L) U-bolts and fittings: Stainless steel (AISI 304) |
| Dimensions | See drawing |
| Weight | 0.52 kg / 1.15 lb |
| Mounting | On 16 to 54 mm dia. mast tube |

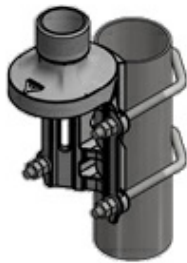
ADDITIONAL DATA

INSTALLATION DETAILS

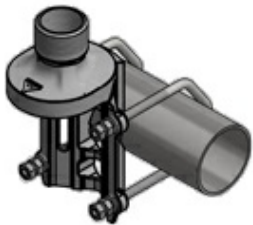
Mast tube
ø42 - ø54 mm



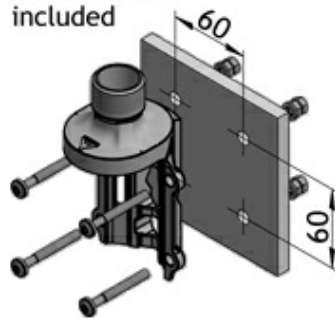
Mast tube
ø16 - ø54 mm



Mast tube
ø16 - ø54 mm



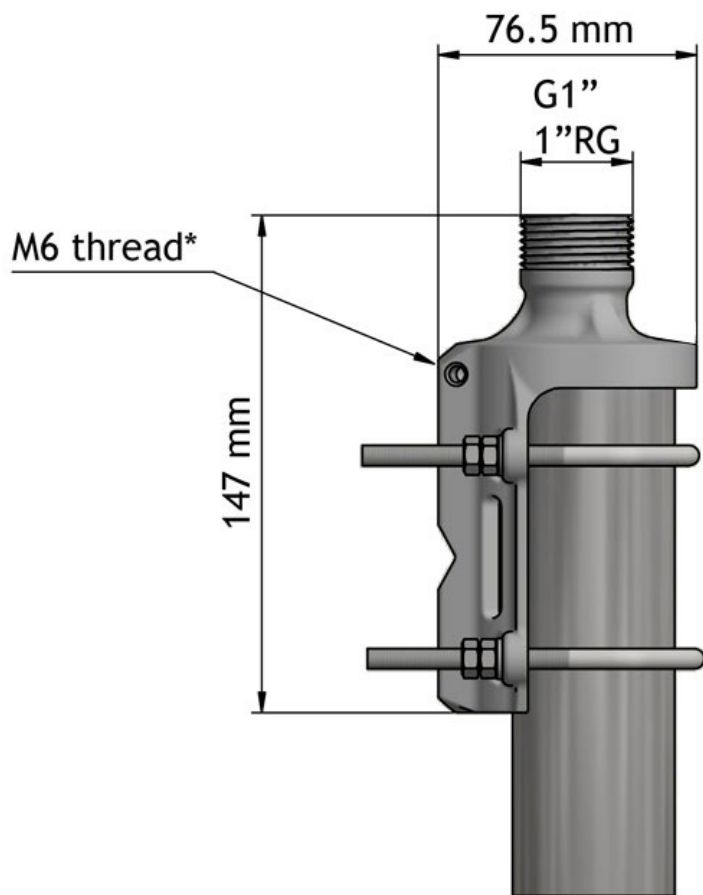
Bolts for wall
mounting not
included



ATEX GROUNDING KIT

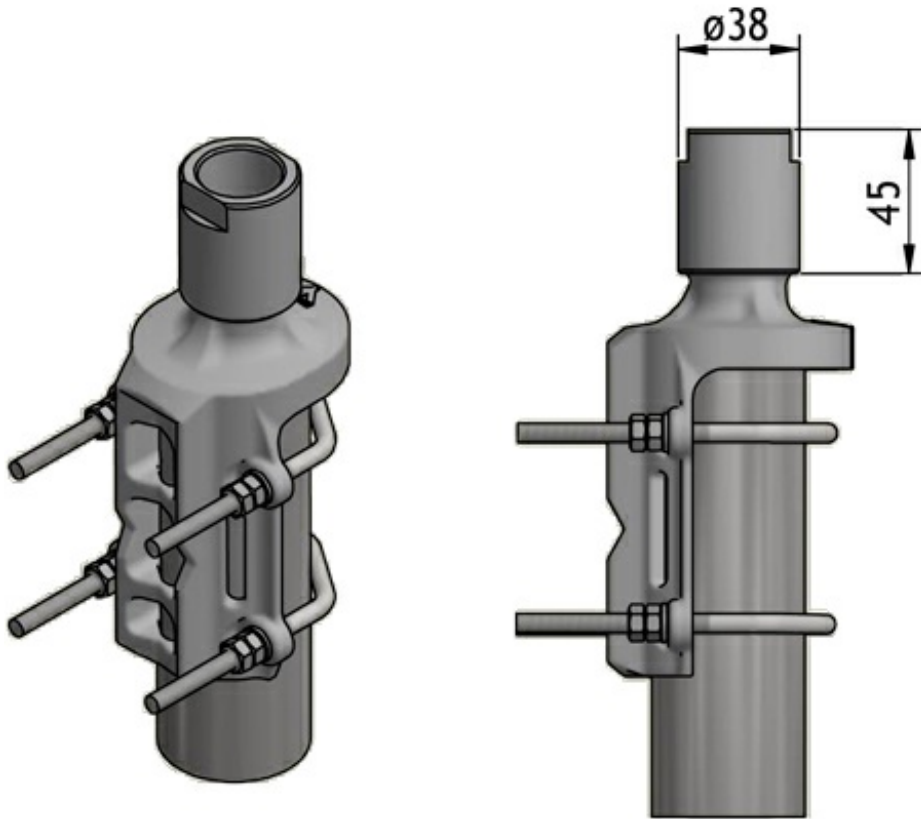


MOUNTING DETAILS

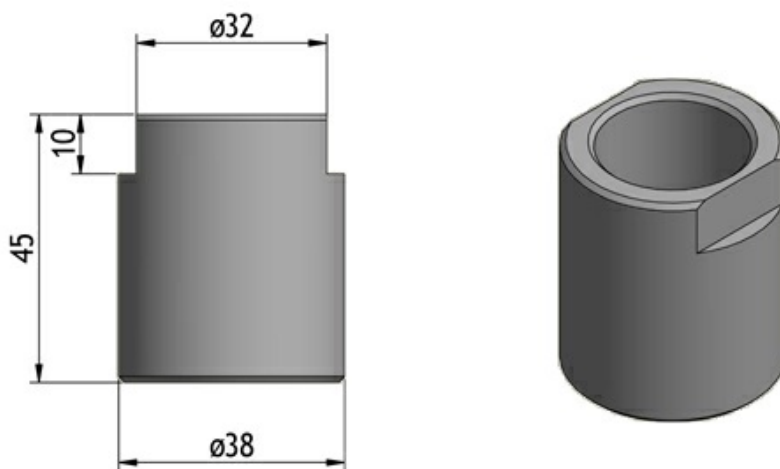


* Only available on the LW-SS-1"-Ex

LW-SS-1" WITH GP ADAPTOR



GP ADAPTOR



The GP Adaptor needs to be ordered separately.