

3 dB Gain $\frac{5}{8}$ λ Mobile Antenna for the TETRA Band

DESCRIPTION

- > Black-chromed stainless steel whip with toggle joint.
- > Factory tuned for the range 380 - 410 MHz.
- > Stainless steel BZ-mount with ball-joint and wing screw whip-fastening system.
- > Simple mounting exclusively with access from the outside. Models with roof thickness from 2 mm to 7.5 mm mounting from the inside.
- > Choice between two connection principles:
 - > BZ-mount: FME-connection (supplied without cable).
 - > BZP4-mount: Permanently attached 4 m cable terminated with FME-connector.



ORDERING

Type	Product No.	Description
MU 3-BZ/TETRA/I	130001374	BZ-mount with FME-system
MU 3-BZP4/TETRA/I	130001389	BZP4-mount with 4 m cable and FME-connector

SPECIFICATIONS

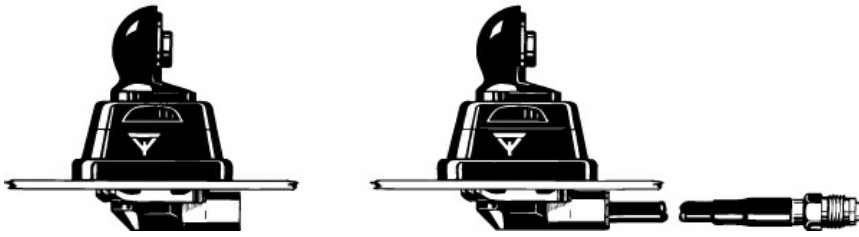
Electrical	
Model	MU 3-BZ/TETRA/I
Frequency	380 - 410 MHz
Antenna Type	Mobile whip antenna
Max. Input Power	100 W
Polarisation	Vertical
Impedance	50 Ω
Gain (EIA RS-329-1)	3 dB
Mechanical	
Materials	Whip: Stainless steel, black-chromed Black-chromed brass Mount: Black-chromed brass Weather- and shockproof plastics Stainless steel
Installation Torque	7.5 +/- 1 Nm
Colour	Black
Height	490 mm / 19.29 in.
Weight	BZ-version: Approx. 140 g BZP4-version: Approx. 280 g
Mounting	21mm dia. hole (For roof thicknesses 2 mm up to 7.5 mm mounting hole should be 22mm dia.)
Mounting Plate Thickness	Max. 2.0 mm (Models up to 7.5 mm on request)

ADDITIONAL DATA

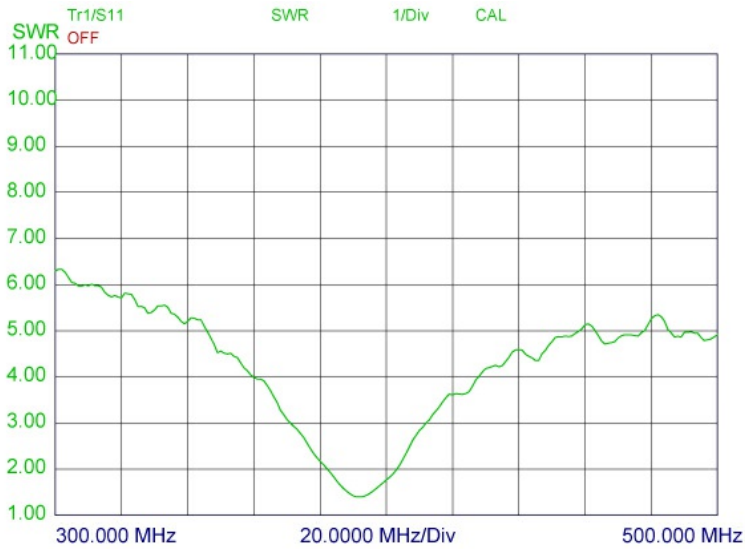
THE WHIP IS COMPATIBLE WITH ALL BELOW MOUNTS.

BZ-Mount

BZP4-Mount



TYPICAL SWR CURVE



INSTALLATION

This antenna is provided with type BZ-mount. The whip is fastened to the mount by means of our standard ball-joint and wing screw system. The adjustable ball-joint ensures that the whip can always be mounted in a vertical position independent of the angle of the installation spot.

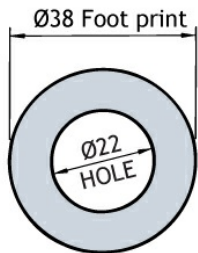
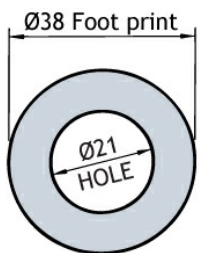
The BZ-mount is particularly well suited for mounting on car-roofs because of its ability to be installed exclusively with access from the outside. The BZ-Mount for roof thickness from 2 mm to 7.5 mm must be mounted from the inside.

However, the antenna can be installed anywhere on the car, as the BZ-mount is equally well suited for mounting on e.g. trunk or wing.

1. INSTALLATION DIMENSIONS

BZ-MOUNT

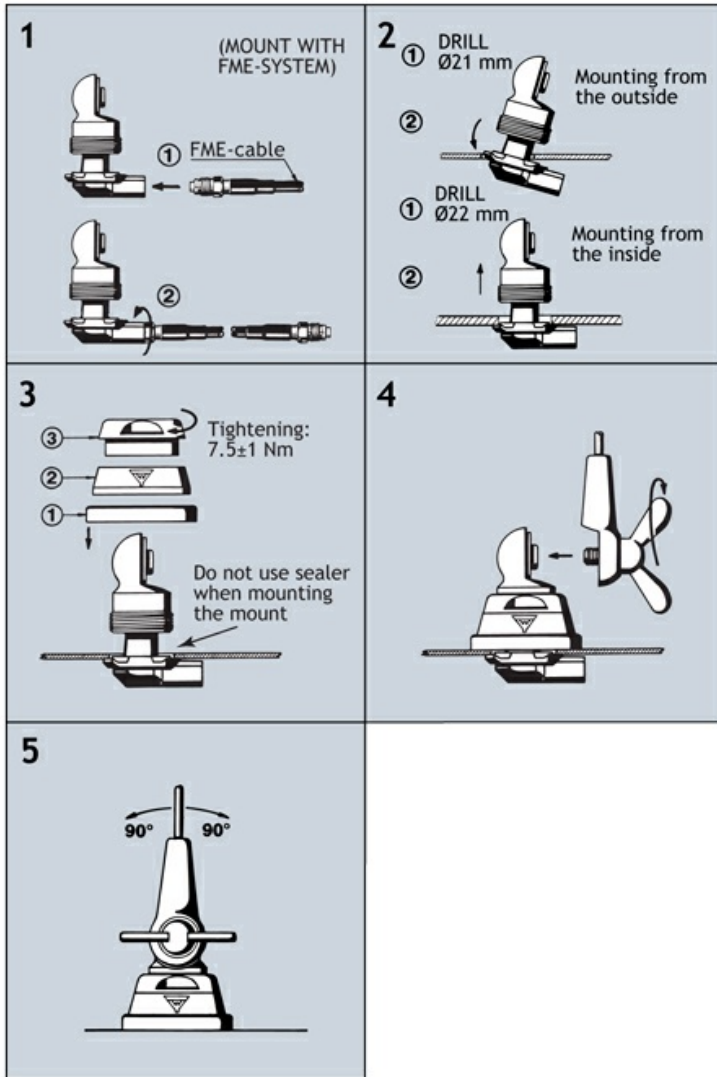
BZ-MOUNT



Build- in depth: 10.5 mm
Mounting from the outside

Build- in depth: 10.5 mm
Mounting from the inside

2. INSTALLATION STEPS



Do not use sealer on rubber gasket or other places.