

Helical Mobile Antenna for the 80 MHz Band

DESCRIPTION

- Reduced-size quarter-wave antenna for all applications where height is a problem.
 - Ideal on busses, trucks, building-site machines, forestry vehicles etc.
 - High efficiency due to the "continuous loading" helical principle.
 - Stainless steel ZP4-mount with ball-joint and wing screw whip-fastening system.
 - Simple mounting exclusively with access from the outside.
- Models for roof thickness from 2 mm to 7.5 mm with mounting from the inside.
- Delivered with 4 m cable permanently attached to the mount and terminated with FME-connector.

Please note that the ML 3-type ZP4-mount is provided with a built-in matching unit. Consequently, the mount cannot be used together with other whips.



ORDERING

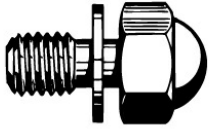
Type	Product No.
ML 3-ZP4	130000655

SPECIFICATIONS

Electrical	
Model	ML 3-ZP4
Frequency	Tunable by cutting within: 66....88 MHz
Antenna Type	Shortened $\frac{1}{4}\lambda$ helical antenna
Max. Input Power	30 W
Polarisation	Vertical
Impedance	50 Ω
Gain (EIA RS-329-1)	-3 dB
Mechanical	
Materials	Whip: Steel helix moulded in flexible thermoplastic rubber Chromed brass Mount: Chromed brass Weather- and shockproof plastics Stainless steel
Cable	4 m RG 58
Installation Torque	7.5 +/- 1 Nm
Colour	Black / Metallic Silver
Height	37 mm / 1.46 in.
Weight	0.4 kg / 0.88 lb
Mounting	21mm dia. hole (For roof thicknesses 2 mm up to 7.5 mm mounting hole should be 22mm dia.)
Mounting Plate Thickness	2 mm / 0.08 in.

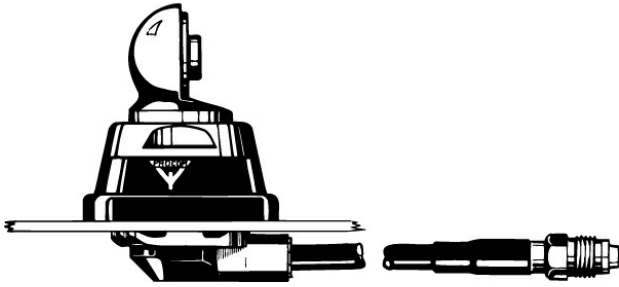
ADDITIONAL DATA

Hat screw option:



For antenna delivered with hat screw instead of wing screw add a K to the antenna designation.

ZP4-Mount



Please note that the ML 3-type ZP4-mount is provided with a built-in matching unit. Consequently, the mount cannot be used together with other whips.

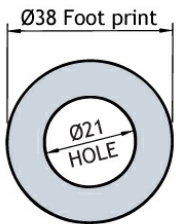
INSTALLATION

This antenna is supplied with type ZP4-mount. The whip is fastened to the mount by means of our standard ball-joint and wing screw system. The adjustable ball-joint ensures that the whip can always be mounted in a vertical position independent of the angle of the installation spot.

The ZP4-mount is particularly well suited for mounting on carroofs as it can be installed exclusively with access from the outside. The ZP4-Mount for roof thickness from 2 mm to 7.5 mm must be mounted from the inside. However, the antenna can be installed anywhere on the car, as the ZP4-mount is equally well suited for mounting on e.g. trunk or wing.

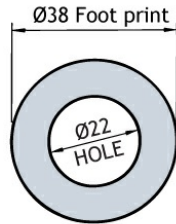
1. INSTALLATION DIMENSIONS

Z-MOUNT



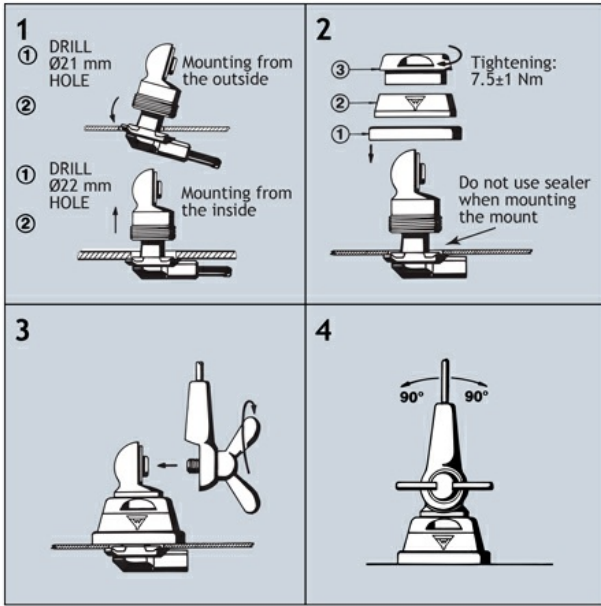
Build- in depth: 10.5 mm
Mounting from the outside

Z-MOUNT



Build- in depth: 10.5 mm
Mounting from the inside

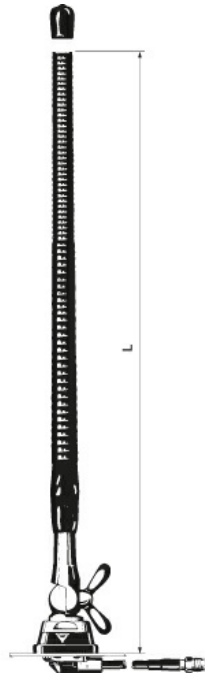
2. INSTALLATION STEPS



Do not use sealer on rubber gasket or other places.

3. TUNING

The antenna should always be post-adjusted using an SWR 4000 or the like.
DO NOT cut too much at a time - one complete winding of the helix moves the antenna resonance considerably.



PLEASE NOTE

To make this antenna operate as efficiently as possible, a matching unit has been built into the antenna mount. Consequently, neither mount nor whip can be used together with other mounts/whips.

