

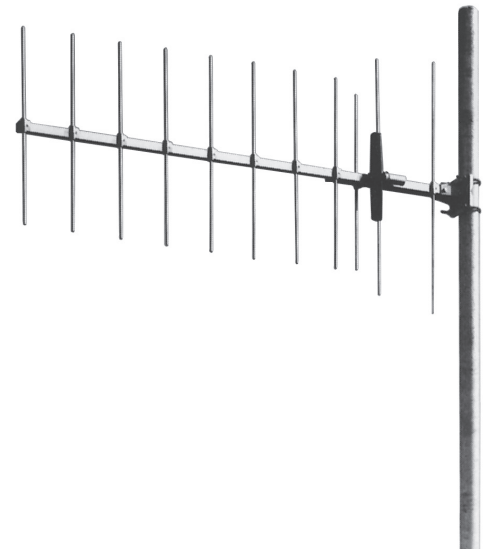
11-Element Yagi Antenna 146 ... 174 MHz

Vertical / Horizontal Polarization

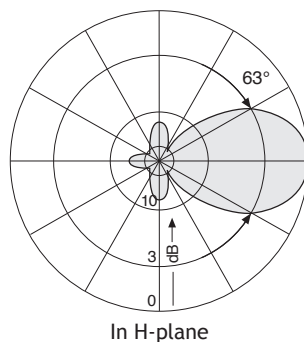
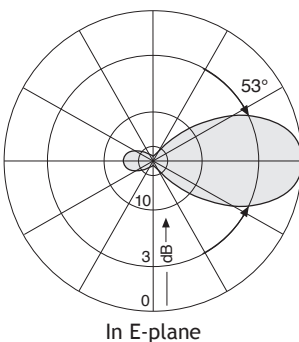
The Schomandl K520721 yagi antenna is intended for use in professional fixed-station applications in the 146-174 MHz band.

- High gain at a narrow beam width for directional links
- Weather-resistant aluminum construction.
- Entire antenna at DC ground potential.

| | |
|--------------------------------|--|
| Type No. | K 52 07 21 |
| Frequency range | 146 - 174 MHz |
| Polarization | Usable for horizontal or vertical polarization |
| Gain (ref. $\lambda/2$ dipole) | 8.5 dB |
| Impedance | 50 Ω |
| VSWR | < 1.5 |
| Max. power | 250 W (at 50 °C ambient temperature) |
| Order No. | 80000006 |



- Material:** Antenna: Weather-resistant aluminum.
All screws and nuts: Stainless steel.
- Mounting:** On masts from 60- 105 mm [2.4-4.1 inches] diameter, by means of supplied mounting kit.
- Grounding:** All metal parts of the antenna including the mounting kit are DC grounded.
The inner conductor is coupled capacitively.
- Shipping:** The antenna will be shipped dismounted.



| Mechanical specifications | | |
|---------------------------|-----------------------------------|--|
| Input | 7-16 female | |
| Connector position | Bottom | |
| Wind load (at 150 km/h) | (N) [lbf] lateral: frontal: | Horizontal: 235 [53] 140 [31] |
| Max. wind velocity | (km/h) [mph] | 210 [130] |
| Height | (mm) [inches] | approx. 1022 [40.2] |
| Yagi length | (mm) [inches] | approx. 1910 [75.2] |
| Weight | (kg) [lb] | 10.0 [22.0] |
| Packing size | (mm) [inches] | 1954 x 186 x 162 [77.0 x 7.3 x 6.4] |