

CMAX-EXT-43-153

Cell-Max™ Low PIM Directional Outdoor Antenna, 698–960 MHz and 1710–2700 MHz, 4.3-10

Product Classification

Product Type	Indoor/outdoor antenna
Product Brand	Cell-Max™

General Specifications

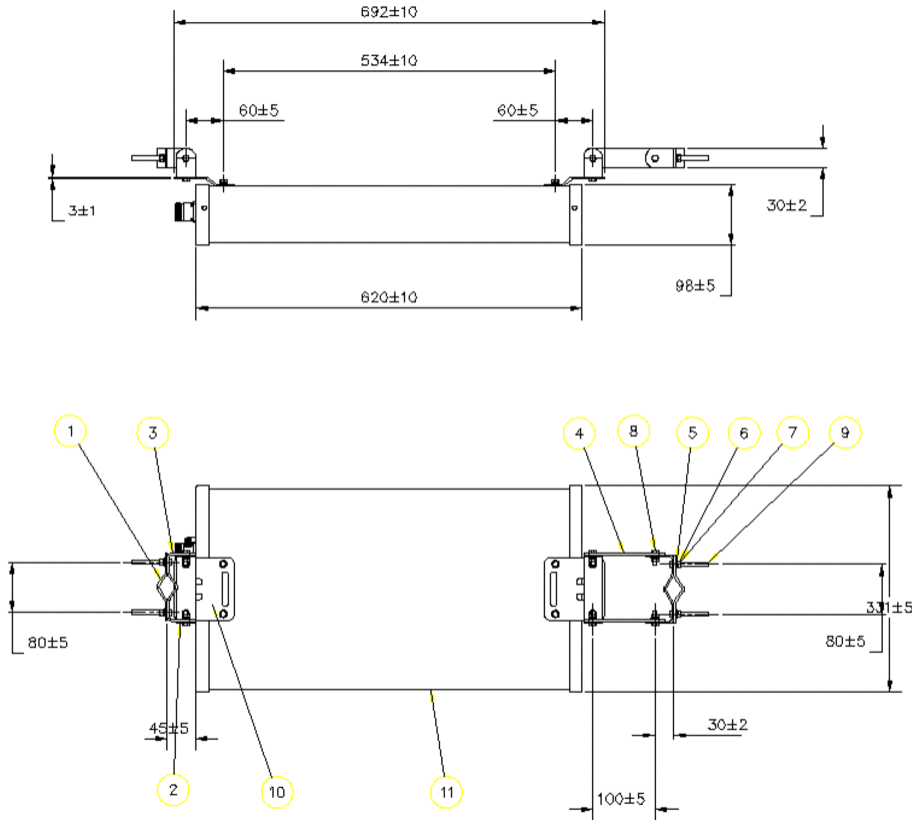
Antenna Type	Directional
Application	Outdoor
Color	White
Mounting	Poles between 25–60 mm with supplied clamps
Number of Ports, all types	1
RF Connector Interface	4.3-10 Female

Dimensions

Width	331 mm 13.032 in
Length	620 mm 24.409 in
Depth	98 mm 3.858 in

CMAX-EXT-43-153

Outline Drawing



Electrical Specifications

Impedance	50 ohm
Lightning Protection	dc Ground
Operating Frequency Band	1710 – 2700 MHz 698 – 960 MHz
Polarization	Vertical

Electrical Specifications

Frequency Band, MHz	698–800	800–960	1710–2200	2200–2700
Gain, dBi	10	11	11	11
Beamwidth, Horizontal, degrees	68	60	60	52

CMAX-EXT-43-153

Beamwidth, Vertical, degrees	30	28	30	30
Front-to-Back Ratio at 180°, dB	18	18	20	20
VSWR Return loss, dB	1.8 10.9	1.8 10.9	1.8 10.9	1.8 10.9
PIM, 3rd Order, 2 x 20 W, dBc	-153	-153	-153	-153
Input Power per Port, maximum, watts	100	100	100	100

Material Specifications

Radome Material PVC, UV resistant

Mechanical Specifications

Wind Loading at Velocity, maximum 154.2 lbf @ 216 km/h | 686.0 N @ 216 km/h

Wind Speed, maximum 216 km/h | 134.216 mph

Environmental Specifications

Operating Temperature -40 °C to +60 °C (-40 °F to +140 °F)

Relative Humidity Up to 100%

Ingress Protection Test Method IEC 60529:2001, IP66

Packaging and Weights

Width, packed 350 mm | 13.78 in

Depth, packed 160 mm | 6.299 in

Length, packed 830 mm | 32.677 in

Packaging quantity 1

Weight, gross 7.4 kg | 16.314 lb

Weight, net 4.7 kg | 10.362 lb

Regulatory Compliance/Certifications

Agency	Classification
CHINA-ROHS	Below maximum concentration value
ISO 9001:2015	Designed, manufactured and/or distributed under this quality management system
REACH-SVHC	Compliant as per SVHC revision on www.commscope.com/ProductCompliance
ROHS	Compliant

