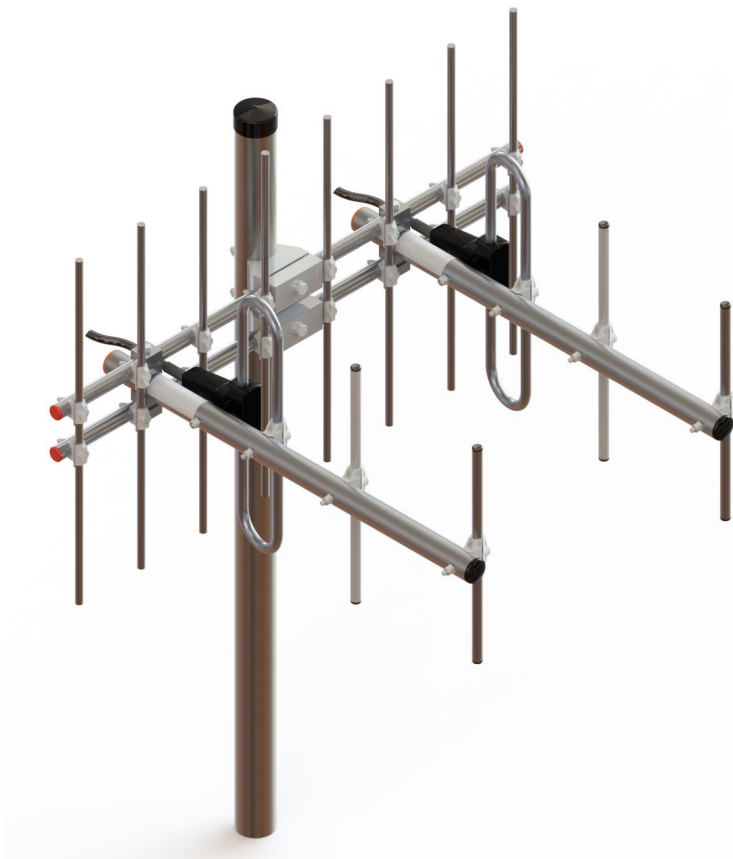


7041385-CM2

Double Yagi antenna 380-400 MHz

Description

A bayed 4-element Yagi array for UHF indoor coverage systems. The antenna is designed to offer a narrow beam pattern, very low sidelobes and high front to back ratio, making it ideal as a donor / pickup antenna in indoor UHF repeater systems.



ORDERING

Type	Product No.	Frequency
Double Yagi antenna 380-400 MHz	7041385-CM2	380 - 400 MHz
Double Yagi antenna 380-400 MHz, rotator mount	7041385-CM2-R	380 - 400 MHz

SPECIFICATIONS

Electrical	
Frequency	380 - 400 MHz
Max. Input Power	150 W
Polarisation	Linear (Vertical or Horizontal)
3 dB Beamwidth, E-Plane	56 °
3 dB Beamwidth, H-Plane	46 °
Impedance	50 Ω
Gain	9.5 dBd (11.7 dBi)
VSWR	< 1.5:1
Front-To-Back Ratio	> 20 dB
Antistatic Protection	All metal parts DC-grounded (Connector shows a DC-short)
1st Sidelobe level	-25 dB

Mechanical	
Connection(s)	N(f) on 1.3m RG213/U cable (including splitter)
Materials	Boom, 32 mm dia. aluminium elements, 12.7 mm dia. aluminium balun, fully moulded enclosure
Dimensions	75 x 60 x 48 cm (29.5" x 23.6" x 18.9")
Wind Load	129 N (160km/h)
Weight	4.4 kg / 9.7 lb
Mounting Bracket	Included for 32 - 50 mm mast
Balun Encapsulant	Polyurethane Resin U-600

Environmental	
Operating Temperature Range	-40 to 65 °C
Ingress Protection	IP68

