

# Smarteq™ LPCA 8 Low Profile Combination Antenna

LTE450/LMR/TETRA/P25/ISM

710494



## Description

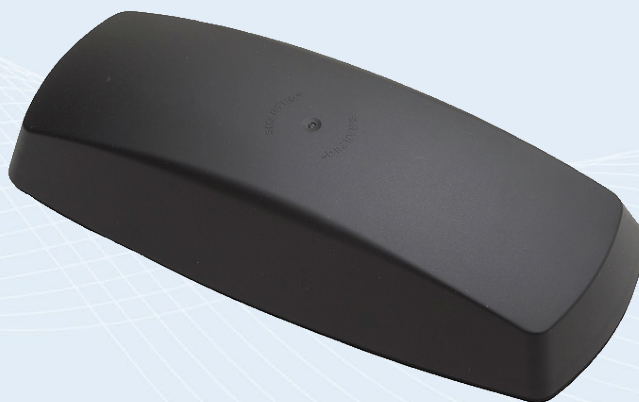
LPCA 8 is a rugged, low profile combination antenna.

## Technologies

- TETRA
- LoRA
- ISM 433/444

## Features

- 410-430 MHz with an extended range 380-450 MHz
- Ground plane independent
- Rugged
- IP67
- Cable approved acc ECE-R118



## Smarteq™ LPCA 8 Low Profile Combination Antenna

LTE450/LMR/TETRA/P25

The Smarteq™ LPCA 8 is a rugged, low profile combination antenna designed for use in telematics applications. The antenna is the perfect choice when the application needs reliable communications for e.g. buses, heavy vehicles, ambulances, forest machines and other M2M applications.

### Features

- 410-430 MHz with an extended range 380-450 MHz
- Ground plane independent
- Rugged
- IP67
- Cable approved acc ECE-R118

### Applications

- Buses
- Heavy Vehicles
- Ambulances
- Forest Machines
- M2M

### Certifications



## SPECIFICATIONS

# Smarteq™ LPCA 8 Low Profile Combination Antenna

LTE450/LMR/TETRA/P25

## Standard Configurations

Part Numbers	Connector Type
710494	FME-f

## Electrical Specifications – All Models

Frequency Ranges	380-410 MHz	410-430 MHz	430-450 MHz
Gain	6.5 dBi on metal 4.5 dBi free space	5.5 dBi on metal 5.5 dBi free space	3.5 dBi on metal 1 dBi free space
VSWR	<1.9:1	<1.7:1	<3:1
Nominal Impedance	50Ω		
Polarization	Vertical		
Radiation Pattern (Horizontal)	Omnidirectional		
Max. Power	20W		

## Mechanical and Environmental Specifications – All Models

Dimensions	280 x 120 x 50mm
Installation	Hole mount, Ø19mm and 2 x Ø7mm Installation thickness ≤ 6mm
Connector	FME-f
Cable	RG316 0,5 m
Color	Black
IP class	IP67
Operating / Storage Temperature	-40°C to +85°C

CONTACT US

**For more information about  
this product, contact your  
sales representative or visit  
> [pctel.com/antenna-products](https://pctel.com/antenna-products)**

### **Solving Complex Wireless Challenges**

PCTEL is a leading global provider of wireless technology solutions, including purpose-built Industrial IoT devices, antenna systems, and test and measurement products. Trusted by our customers for 29 years, we solve complex wireless challenges to help organizations stay connected, transform, and grow.



**PCTEL, Inc.**

T: +1 630 372 6800 | [pctel.com](https://pctel.com)